

Letters and Sounds Workbook



s a t p i n



visit [twinkl.com](https://www.twinkl.com)

Practise writing the letters s, a and t.

Trace over these letters and then try writing your own.

S

S

S

S

S

S

a

a

a

a

a

a

t

t

t

t

t

t

Practise writing the letters p, i and n.

Trace over these letters and then try writing your own.

p p p p p p

i i i i i i

n n n n n n

Can you match the letter to its capital letter?

Draw a line between the pairs of letters.

s

N

t

S

n

I

a

A

i

P

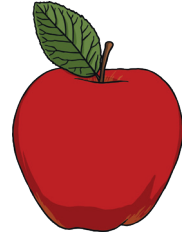
p

T

Can you match the pictures to the letter they begin with?

Draw a line between the pictures and matching letters.

s



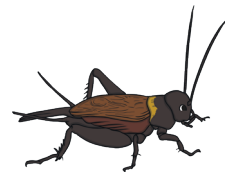
a



t



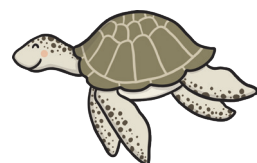
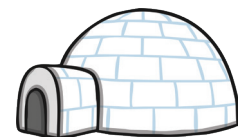
p



i



n



Can you read the word then match it to the correct picture?

Draw a line between the pictures and the matching words.

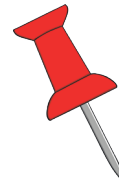
sat



pin



tap



pan



nap



ant



tin



pat

