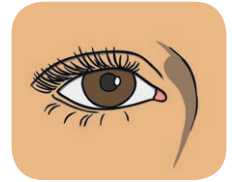




Five Senses



sight

A large rectangular area defined by a dashed purple line, intended for writing or drawing. The area is divided into four quadrants by a vertical dashed line and a horizontal dashed line that meet at a central point.

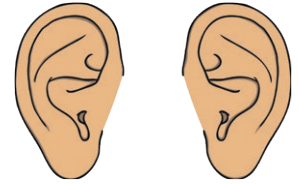


visit [twinkl.com](https://www.twinkl.com)



Five Senses

hearing



A large rectangular area defined by a dashed purple line, intended for writing or drawing. The area is divided into four quadrants by a vertical dashed line and a horizontal dashed line that intersect at the center.



Five Senses



taste

A large rectangular area defined by a dashed purple border, intended for writing or drawing. The area is divided into four quadrants by a vertical dashed line and a horizontal dashed line that meet at a central point.

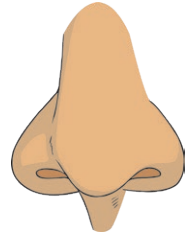


visit [twinkl.com](https://www.twinkl.com)



Five Senses

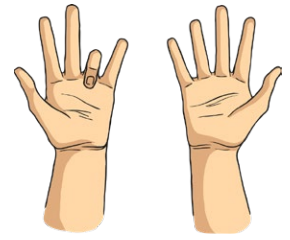
smell



A large rectangular area defined by a dashed purple line, intended for writing or drawing. The area is divided into four quadrants by a vertical dashed line and a horizontal dashed line that meet at a central point. Each of the four corners of the rectangle has a small semi-circular notch cut out.



Five Senses



touch

A large dashed-line box for writing, divided into four quadrants by a vertical and a horizontal dashed line.